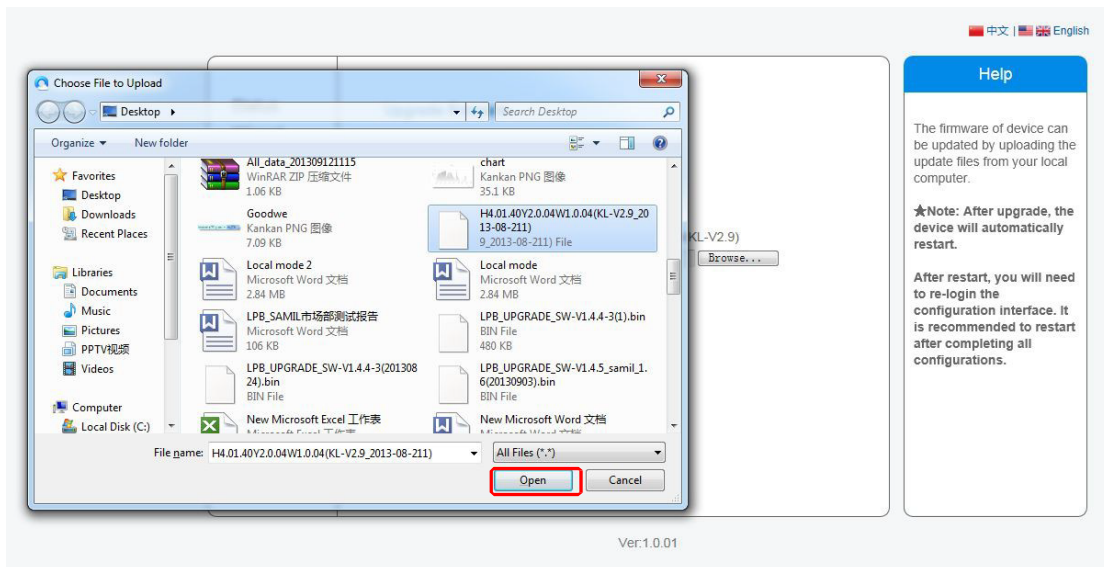
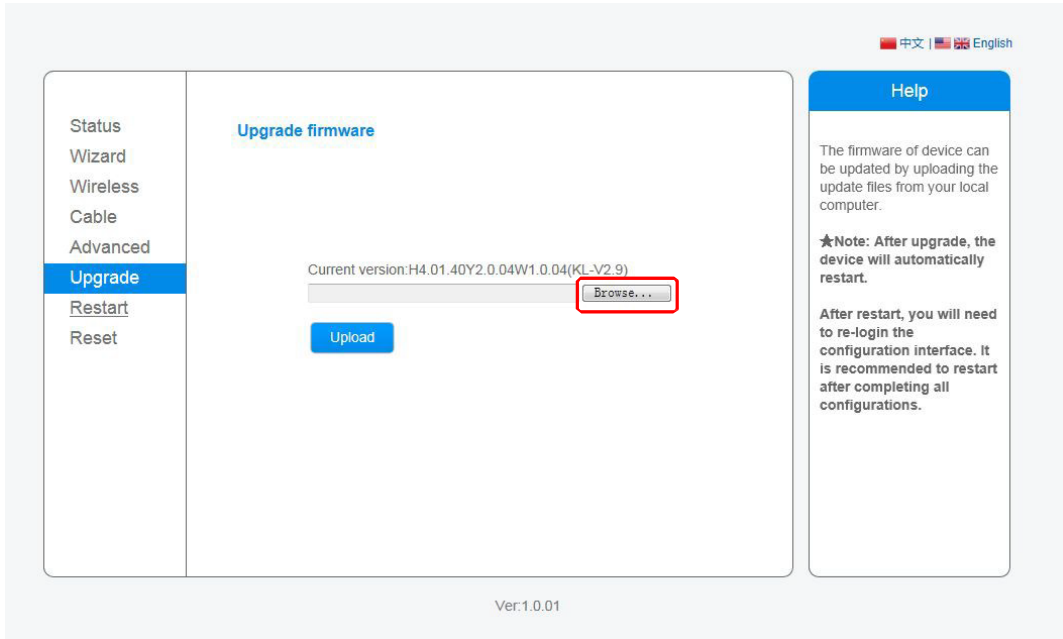
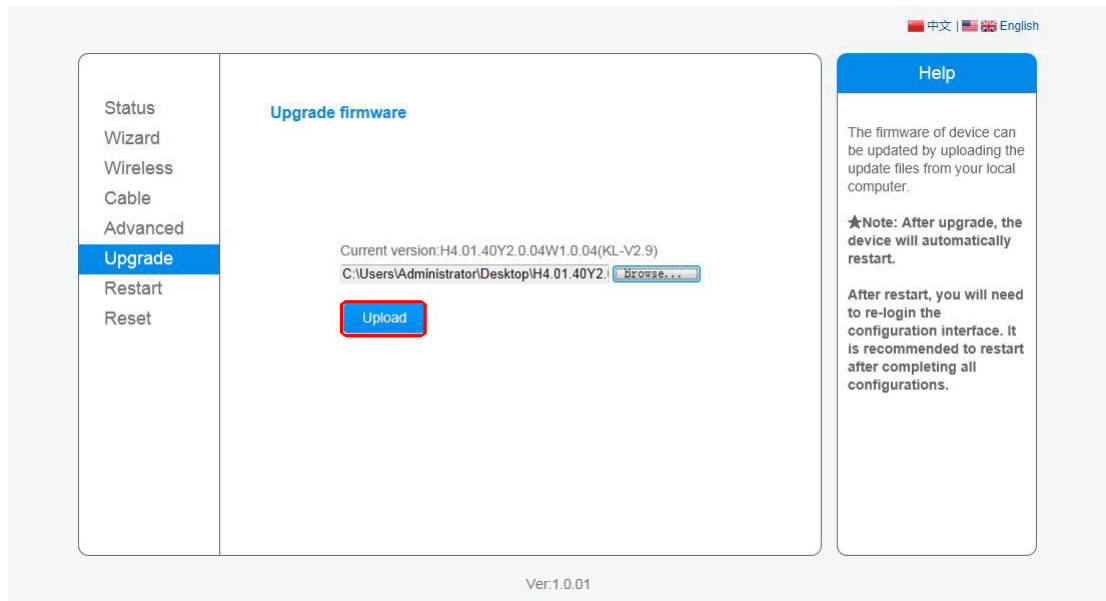


Solarman WIFI-USB Upgrade Procedures

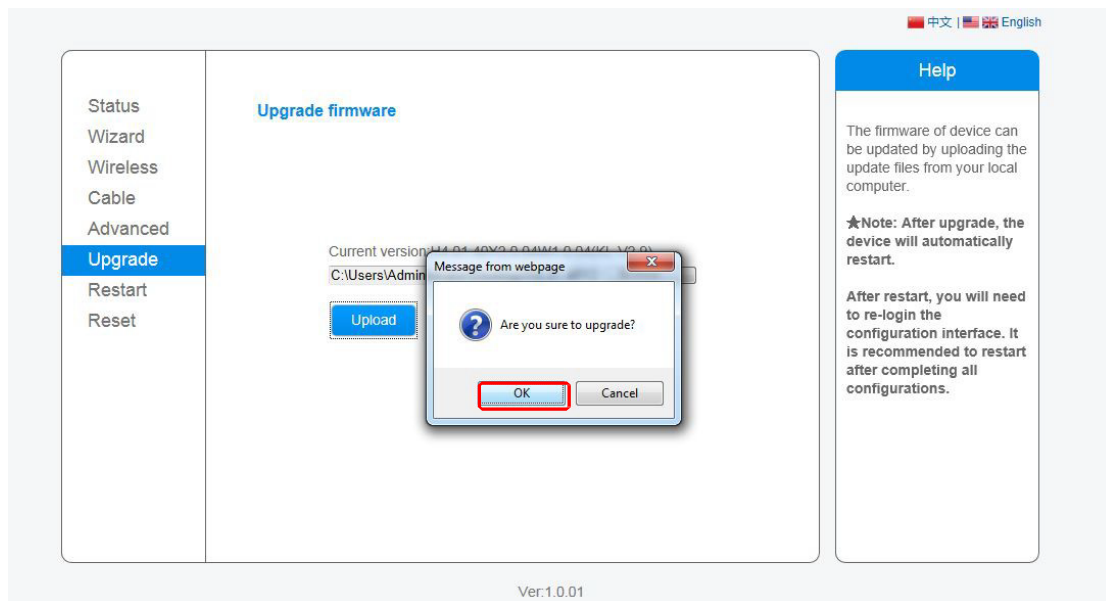
1. Access via PC to the IP address assigned by the router/switch to the stick logger.
2. Click **Browse** to select the latest firmware file, then click **Open**



3. Click **Upload** after the file is selected.



4. Click **OK** to start upgrade



- Notice: 1.The firmware upload should be operated during a shiny period among the day.
2. During upgrade please make sure that the power and network connection between WIFI Kit and the router is stable, and the WIFI signal is constantly good.

5. The following page will display if firmware upgrade is successful.

<p>Status Wizard Wireless Cable Advanced Upgrade Restart Reset</p>	<p>Rebooting successful!</p> <p>To re-login the configuration interface, please make sure that your computer or smart phone and our device are in the same network segment, and enter the new IP address of the device to access the interface.</p>	<p>Help</p> <p>★Note: The IP address of the device may have changed, please refer to User Manual to check the procedures to obtain the new IP address.</p>
---	--	---