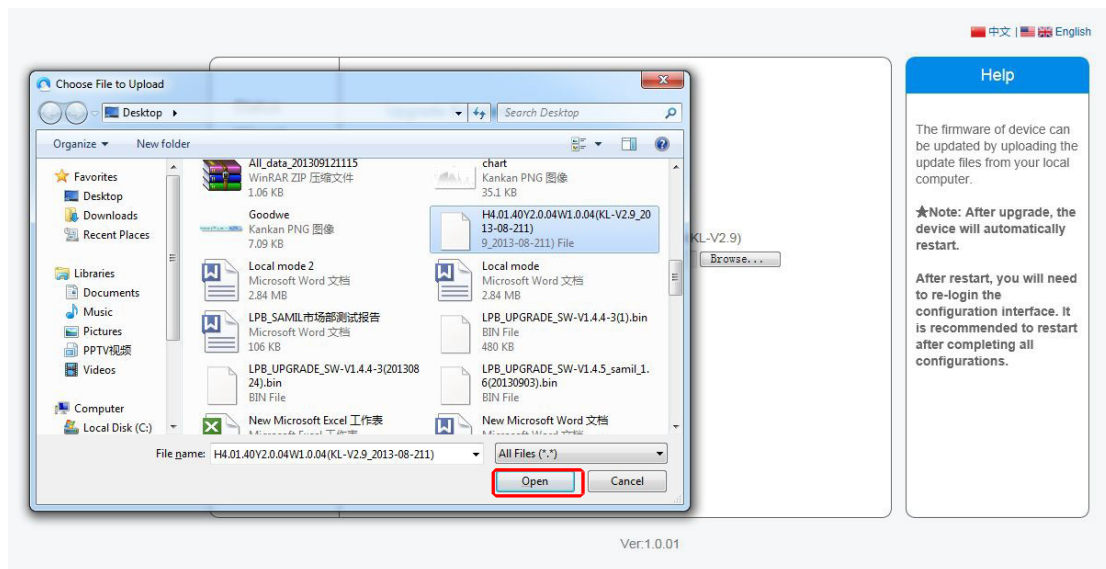
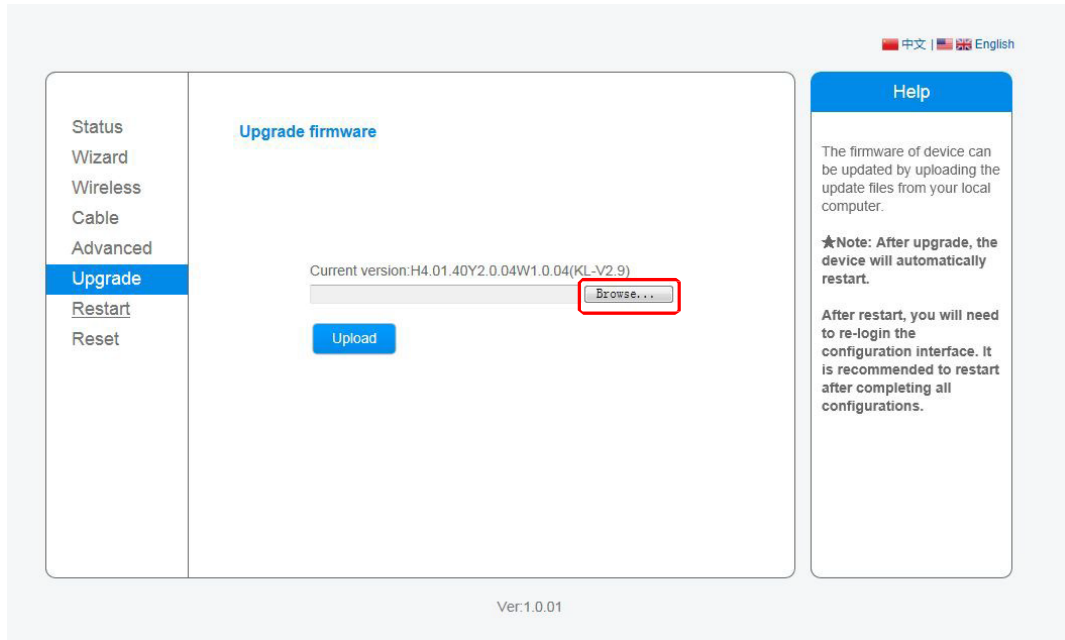
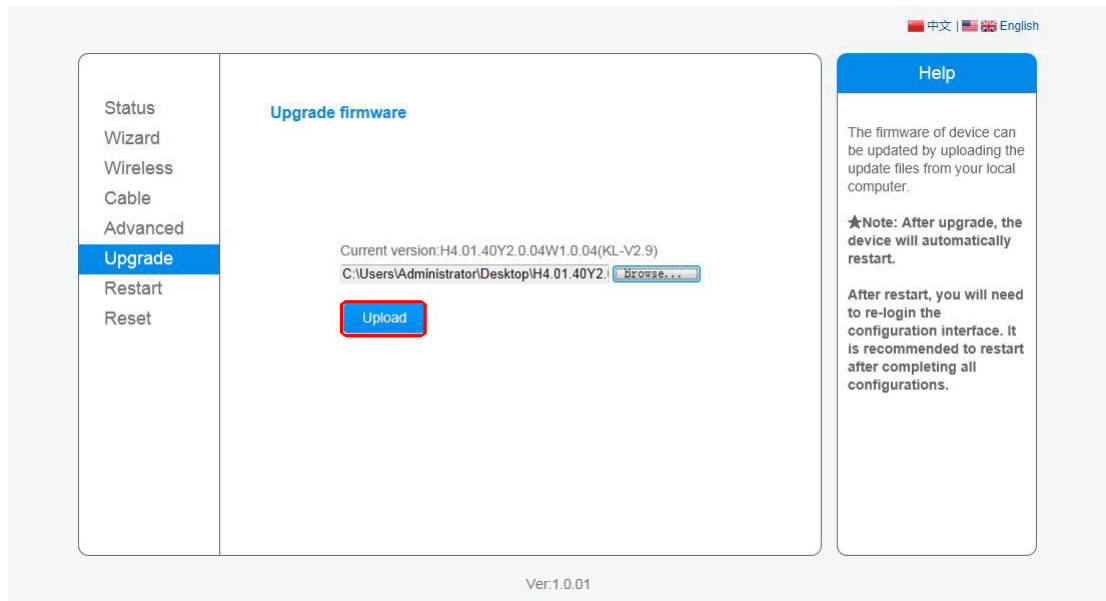


Solarman WIFI-USB Upgrade Procedures

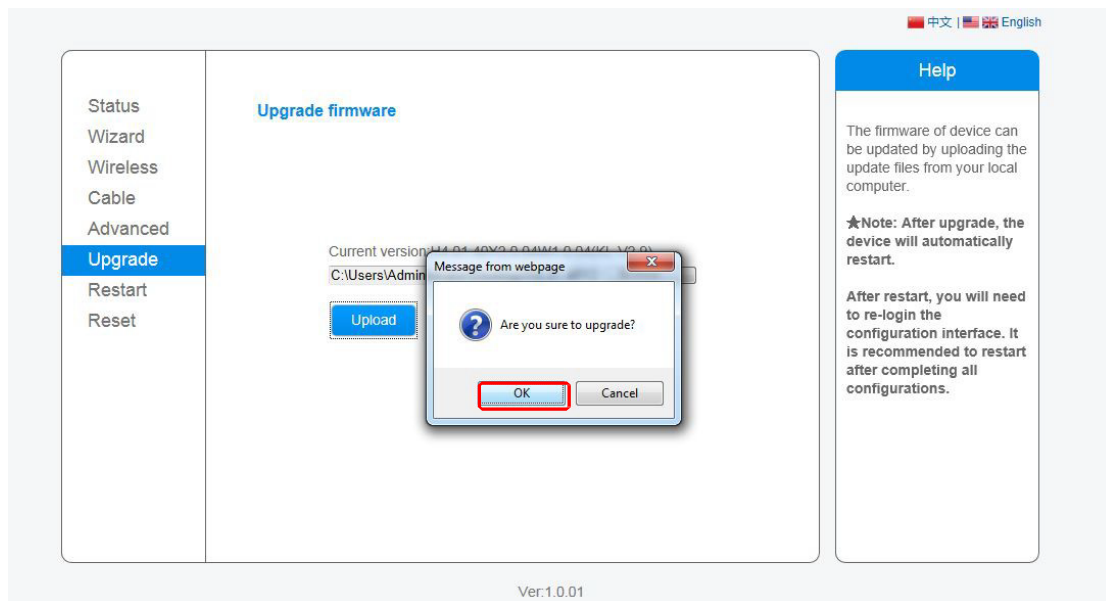
1. Connect with your PC to the **WIFI** adapter's access point network, open your phone's browser and access the WEB server (address **10.10.100.254**).
2. Logon to the Web server and open **Upgrade** interface.
3. Click **Browse** to select the latest firmware file, then click **Open**



4. Click **Upload** after the file is selected.



5. Click **OK** to start upgrade



- Notice: 1.The firmware upload should be operated during a shiny period among the day.
2. During upgrade please make sure that the power and network connection between WIFI Kit and the router is stable, and the WIFI signal is constantly good.

6. The following page will display if firmware upgrade is successful.

<ul style="list-style-type: none">StatusWizardWirelessCableAdvancedUpgradeRestartReset	<p>Rebooting successful!</p> <p>To re-login the configuration interface, please make sure that your computer or smart phone and our device are in the same network segment, and enter the new IP address of the device to access the interface.</p>	<p>Help</p> <p>★Note: The IP address of the device may have changed, please refer to User Manual to check the procedures to obtain the new IP address.</p>
--	--	---